



TEPS NEWSLETTER

Term 2 Week 3

13th May 2022

Harris Road, Constitution Hill 2145

Darug Country

Phone: 9631 3996 Fax: 9896 3191

Email: toongabest-p.school@det.nsw.edu.au

Important Dates

Term 1

- Every Tuesday, Wednesday & Thursday Breakfast Club
- 23/05/22 Zone Cross Country
- 13/05/22 NSW Junior Chess
- 19/05/22 After School Chess Practice
- 20/05/22 Zones of Regulation Program Bancroft & Mabo
- 24/05/22 UWS Campus Visit
- 25/05/22 School Photos

From the Principal's Desk

Dear Parents and Carers,

Welcome back to Term 2. I hope each family was able to enjoy their break. Some exciting news to share with the TEPS community, during her break Miss Molly O'Rourke celebrated her wedding! We wish her all the very best in this new chapter in her life. Miss O'Rourke will now be known as Mrs Lowery. I would also like to share with you some additional news, Miss Wu is expecting her first child. This is such an incredibly exciting time for her and her partner and we know she will be an amazing mum.



Staff Development Day, all teaching staff worked with George Telford, who is the lead consultant for Challenging Learning in Australia and New Zealand. George addressed areas of challenge, feedback and growth mindset. Following on from this, staff begun Learning Walks. This is when teachers visit other classrooms, provide feedback and reflect on strengths and adjustments that can be made in the classroom. Learning Walks aim to strengthen teacher knowledge and understanding of best practice.

This week, our year 3 and 5 students sat NAPLAN. I remind students and families that it's, but one test. Whilst it has merit, it doesn't capture all of our students' knowledge or their attributes. Qualities such as grit, determination, kindness and resilience, which we holistically teach at TEPS, are very important to success at school and in life. We value and appreciate every child's differences and their self-esteem and love of self, is more important than any one test. We encourage children not to stress, but rather, do their best and give it a go.

Our chess season has started for this year and our first round was against Beresford Road Public School. I wish the TEPS chess team all the very best in future rounds and thank Mr. Fisher for running this program and sharing his expertise.

ANZAC Day assembly was held first day back this term. On this special day we honoured the memory of Australians who have fallen in battle; we share the sorrow of those who have mourned them and of all who have been the victims of armed conflict. We had many special guests which included; Captain Dainel Teys, Australian Army; Member of Seven Hills, the Honourable Mark Taylor; The Right Honourable Deputy Lord Mayor of the City of Parramatta Sameer Pandey; Councillor Henry Green of the City of Parramatta and Sarah Irani President of the P&C.



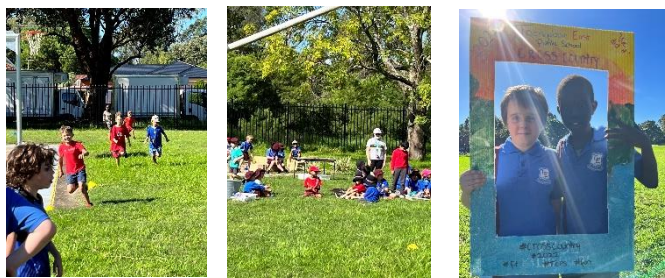
It's been a huge start to Term 2 and I wish our families a relaxing weekend.

Mrs Kristy Haggett
Principal

Cross Country Carnival

Last Friday, our school participated in our annual Cross Country Carnival. It was great to have families back onsite and thank you to the many parents and carers who came along to cheer our students on. We congratulate all students on their great effort and we wish those students who will go on to compete in Zone, all the very best.

A huge thank you to our hard-working P&C members for all their efforts with the carnival. They organised and prepared delicious hotdogs and oranges for our TEPS students. Thank you, Sarah Irani, Pauline Brier and Kate McWhirter, for your efforts on the day and Hayley and Adam Macic for all your hard work behind the scenes.



Sports in Schools Tennis Lesson

Our Sports in School tennis lessons has been a huge success. TEPS students have their very own tennis instructor for 40 minutes every Friday. Some of the skills learnt were, how to use a racquet correctly and serve a ball. The program began in week 1 and will finish in week 4.



Canteen Open Tuesday and Wednesday

Our school canteen is open every Tuesday and Wednesday morning. All orders must be in before 9am. We are still looking for parent volunteers if you could help out a day or two on a Tuesday or Wednesday, that would help to ensure our canteen will remain open long term.

Please speak to Mrs. Roxanne McDonald in the office if you are available.

TOONGABBIE EAST PUBLIC SCHOOL LUNCH MENU TERM 2

SANDWICHES	FRESH FRUIT
(CHOICE OF BREAD: WHITE/WHOLEMEAL)	WATERMELON SLICE \$0.50
VEGETABLE \$1.50	CARROT STICKS \$0.50
JAM \$1.50	
CHEESE \$2.00	
CHEESE & TOMATO \$2.50	

BURGERS	DRINKS
(CHOICE OF SAUCE: TOMATO OR BBQ)	NIPPY'S FLAVOURED MILK \$2.00
BEEF BURGER \$4.00	Chocolate & Strawberry \$2.00
(Includes: Beef Patties, Lettuce, Tomato & Cheese of choice)	WATER ICEBERG \$1.50
CHEESE BURGER \$4.00	JUST JUICE POPPER \$1.50
(Beef Patties and cheese)	Apple, Orange
CHICKEN BURGER \$4.00	CHILLI SPARKLING FRUIT JUICE \$2.00
(Includes: Chicken Breast Patties, Lettuce and Mayo)	Blackcurrant, Apple, Cooia, Grape.

HOT FOOD	FROM THE FREEZER
TEMPURA CHICKEN BREAST RUGGETS x 3 \$2.00	PAZZOLE POPPS (Chocolate, Banana, Rainbow) \$2.00
PIZZA WRAP (Chicken, Cheese) \$3.00	QUEECH STICKS \$0.50
BEEF LASAGNE \$4.00	

CANTEEN OPERATION: LUNCH TIME ONLY 11 – 11:40AM
ON: TUESDAY & WEDNESDAYS
ALL LUNCH ORDERS MUST BE PLACED BY 9:00 am at CANTEEN.

Please write this details on order bags

YOUR CHILD'S Name:
CLASS Name:
Food item:
Money Given:
 (Please write down child's name clearly and put correct money)

IndigenousX and Aboriginal Education Consultative Group (AECG) STEM Lesson

Last Tuesday, our students participated in a STEM Zoom session on Traditional Watercraft. Students learnt about the various types of canoes, what a scar tree is and how canoes were made using bark off a tree, along with many other interesting facts. To wrap up the sessions students made their very own paper canoe.



Student Art Therapist and Psychologist Lessons

This year we will continue our partnership with University of Western Sydney in having a student art therapist and psychologist onsite. Both university students work with our students in group and one on one settings with a teacher to support and help strengthen students social and emotional skills.

A note went out to all families last week. If you **do not** wish for your child to participate in these lessons, please let the office know.

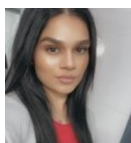
Meet Our Psychology Student

Hi TEPS,

My name is Rhyannon and I am coming up to my final year in uni as a student in the Masters of Counselling and Psychotherapy at Western Sydney University.

I have a passion for music, love to play sport and going for long walks on the beach in my spare time. I especially have a passion for helping children and ensuring that their needs are met so that they can live the most fulfilling life.

My role as a Psychotherapy student at Toongabbie East will involve providing one on one therapy for the students where they will participate in activities and exercises of self-expression and to give students strategies to help them participate in learning.



Miss Rhyannon

Psychology Student

Speechie's Corner

Welcome to Term 2, everyone! We have dived straight into our language and writing lessons. Bancroft has been developing vocabulary and sentence structure to write about unusual animals. A special mention to Jacob who challenged himself to finish all my sentence puzzles within one lesson!

Mabo have been working on persuasive writing and more specifically, learning how to clearly organise their ideas. The students worked well together in groups, discussing how the sentences would fit together to form one paragraph.



Ms Buckman

Speech Pathologist

News From Ms Ho

In Geography this term, Goodes and Bancroft investigated why places are important to Aboriginal and Torres Strait Islander Peoples, and how they share their sense of belonging and identification with the land. Goodes learnt about the importance of rock carvings to Aboriginal and Torres Strait Islander Peoples through reading and thinking about which animals help them to feel like they belong.

In Mabo, we completed a case study on Kosciuszko National Park and how people perceive and protect the natural environment. We will continue to explore how places are important to Aboriginal and Torres Strait Islander Peoples. In Lingiari, we analysed the 2000 Sydney Olympics and its effects on people and places locally, regionally and globally. The class completed a poster about their favourite Olympic games.



Ms Chloe Ho

RFF Teacher (Geography/History)

News From Barty

It has been a wonderful start of Term 2 in the Barty Party! We have excelled at participating in the ANZAC ceremony, the cross country and completing a photo shoot to make Mother's Day gifts.

Barty has been learning about how people live in particular locations and suburbs. We explored how mail is sent and how the mail knows where to find us! We then sent ourselves mail. In honour of our great name's sake, Ash Barty, we have been trying our hand at tennis lessons for sport. I must say, I definitely have one or two future Ash Barty's in my class! Amazing swings and backhands! It is amazing having everyone back on-site and being able to participate in whole school events.



Miss Jaime Gibson

Classroom Teacher (SU)

School Uniform

It is important that our students wear the correct school uniform. Wearing a school uniform promotes a sense of belonging for students and a positive identity for the school community. Most importantly, school uniforms contribute to the personal safety of students whilst at school and out in the greater community.

Below is a school uniform order form if you require support in purchasing any items, please contact the office.



Toongabbie East PS

School Uniform ORDER FORM (as at 27/01/21)

Student Name _____ Class _____ Date _____

Girls Summer	Price	Size	Quantity	Total
Dress (sizes 4-16)	\$37.00	4 6 8 10 12 14 16		
Dress (sizes 18-22)	\$40.00	18 20 22		
Short sleeve shirt with logo	\$22.00	4 6 8 10 12 14 16		
Skorts - maroon	\$19.00	4 6 8 10 12 14 16		
Hat - maroon	\$9.00	S/M M/L		
SUB TOTAL				\$

Boys Summer	Price	Size	Quantity	Total
Grey school shorts	Not supplied			
Short sleeve shirt with logo	\$22.00	4 6 8 10 12 14 16		
Sport shorts - maroon	\$16.00	4 6 8 10 12 14 16		
Hat - maroon	\$9.00	S/M M/L		
SUB TOTAL				\$

Girls Winter	Price	Size	Quantity	Total
Long Sleeve shirt with logo	\$25.00	4 6 8 10 12 14 16		
Maroon long school pants	Not supplied			
Jacket with zip and logo (polar fleece: royal blue)	\$32.00	4 6 8 10 12 14 16		
SUB TOTAL				\$

Boys Winter	Price	Size	Quantity	Total
Long Sleeve shirt with logo	\$25.00	4 6 8 10 12 14 16		
Grey long school pants	Not supplied			
Jacket with zip and logo (polar fleece: royal blue)	\$32.00	4 6 8 10 12 14 16		
SUB TOTAL				\$

Purchases are to be made in cash or Eftpos via the front office.

TOTAL (Page 1)	\$
----------------	----

Bags (Logo)	Price	Size	Quantity	Total
Library Bag	\$12.50	One size		
Backpack	\$35.00	One size		
Excursion/Library/Swim Drawstring Bag	\$6.00	One size		
SUB TOTAL				\$

Hair Accessories	Price	Size	Quantity	Total
Bow Headbands	\$9.00	One size		
Pinwheel Clips	\$5.00	One size		
Loopy Angel Clips	\$5.00	One size		
Angel Elastic	\$4.00	One size		
Essentials	\$3.00	One size		
Short Corkers Elastic	\$7.00	One size		
SUB TOTAL				\$

TOTAL (Page 2)	\$
----------------	----

TOTAL	\$
-------	----

Office Use Only:

Amount Received: \$ _____ Receipt No: _____ Date Paid: _____

Cash: Eftpos: Online: Charge to Account:

Entered on Stock Records: Date: _____ Initials: _____

Amount to P&C: \$ _____

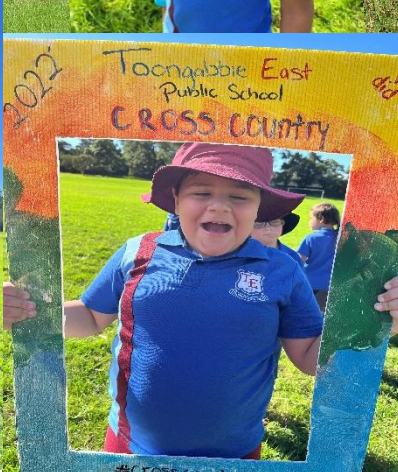


TOONGABBIE EAST PUBLIC SCHOOL

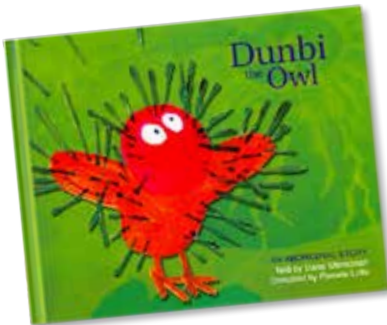
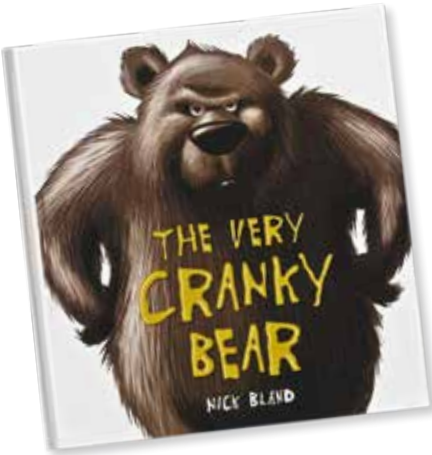


Our School Uniforms





Books for conversation and word-building



Word building

- **Use describing words** when talking. If your child says, "There's a dog." Add description such as, "That's a small, fluffy, white dog."
- Build on your child's language by **teaching them new words**. If your child says "The house is big", you could say "Yes, the house is large" or "The house is enormous".
- When reading with your child **talk about the words** used in books. Discuss together the meaning of the words. You might also like to find new, interesting words to talk about.
- **Practise** using new words in a sentence.
- **Make labels** for things around the house.



Keeping families and children well

COVID-19 Bulletin

Information for schools, child care services and family day care services in western Sydney.

Provided by Western Sydney Local Health District's Munch & Move and Live Life Well @ School teams

Close contacts

Close contacts attending school must also follow these steps in addition to the [NSW Health guidelines](#):

- Notify the school and their outside of school hours care (OOSHC) provider if they are intending to return under this provision.
- Conduct a daily RAT and return a negative result each morning before attending school for 5 school days.
- Wear a mask indoors except when eating or exercising (for those aged 12 and over). Primary school students are recommended to wear a mask indoors (except when eating or exercising).
- Not participate in overnight excursions, including school camps.

Masks

Masks remain optional for staff in primary schools and early childhood settings and for staff and students in high schools. However, they are mandatory on public transport, including during school excursions by public transport or by chartered transport services.

More information is available [here](#).

Help stop the spread of COVID-19 at school and childcare




COVID-19 vaccination

CHANGED OPENING HOURS

Walk-in vaccinations available for all people aged 5+

Blacktown Hospital Vaccination Clinic
10am-6pm Monday to Friday
8am-4pm Saturday and Sunday

The Granville Centre Vaccination Clinic
11am-5pm Friday
9am-3pm Saturday and Sunday
CLOSED Monday to Thursday



[Post](#) for sharing. Read more [here](#).

 **BLACKTOWN HOSPITAL COVID-19 VACCINATION CLINIC**

Low sensory COVID-19 booster vaccinations

FOR PEOPLE:

- AGES 5 AND UP
- LIVING IN WESTERN SYDNEY LOCAL HEALTH DISTRICT
- LOW-MODERATE INTELLECTUAL DISABILITIES, SENSORY DISTURBANCES, BEHAVIOURAL DISORDERS OR CHRONIC MENTAL HEALTH CONDITIONS

Please note these sessions are by appointment only, 10am-12pm each Friday.

For more information contact:
WSLHD-COVIDVaccinationBooking@health.nsw.gov.au



For information:

Western Sydney Local Health District – Centre for Population Health

E: WSLHD-LLWats@health.nsw.gov.au, WSLHD-munchandmove@health.nsw.gov.au

www.healthykidswesternsydney.com.au

